

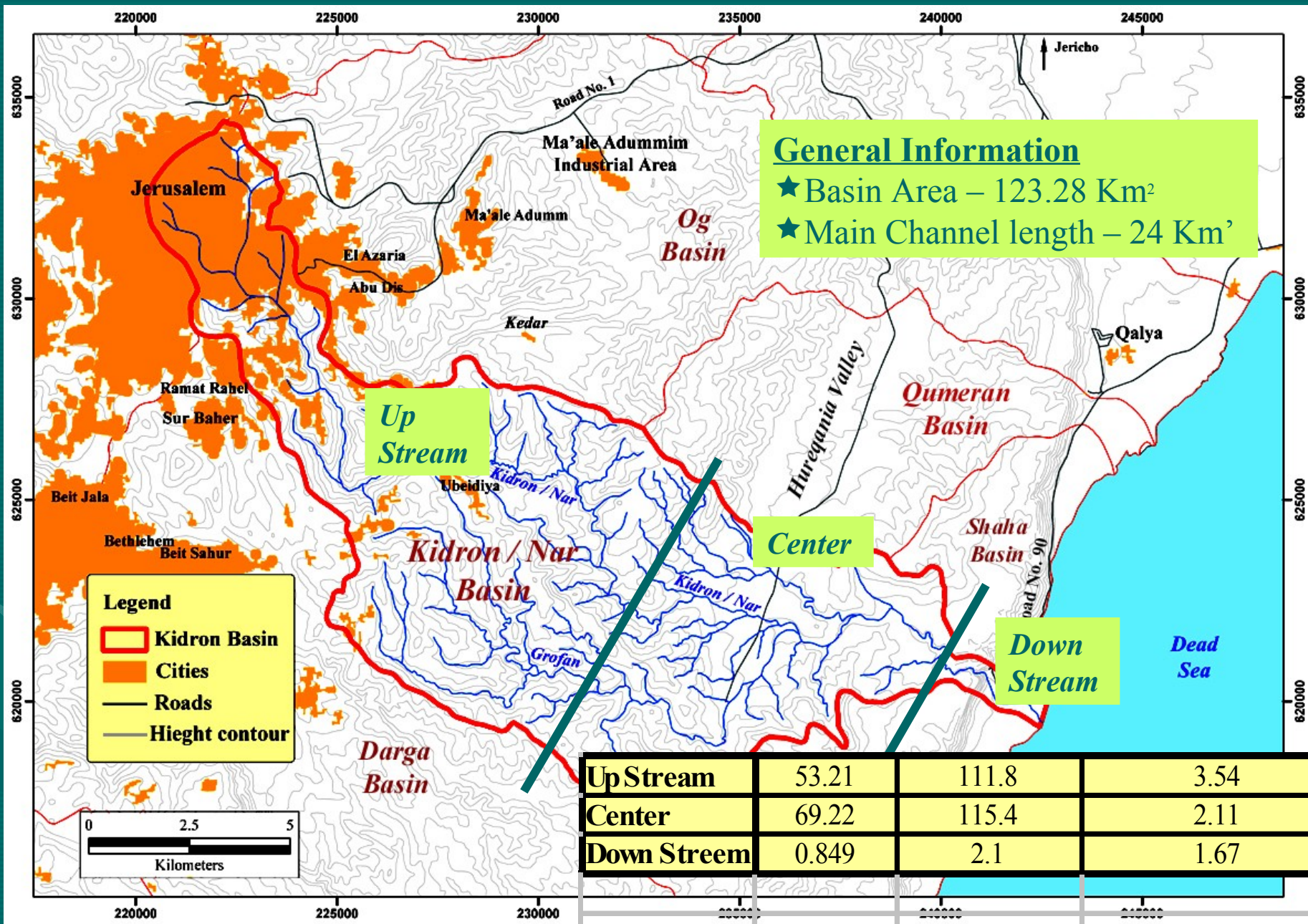
International Master Plan Concept

Searching for Environmental Peace in The Kidron
Valley

Professor Richard Laster

Hebrew University, Jerusalem

Thessaloniki, October 2008



General Information
 ★ Basin Area – 123.28 Km²
 ★ Main Channel length – 24 Km'

Up Stream

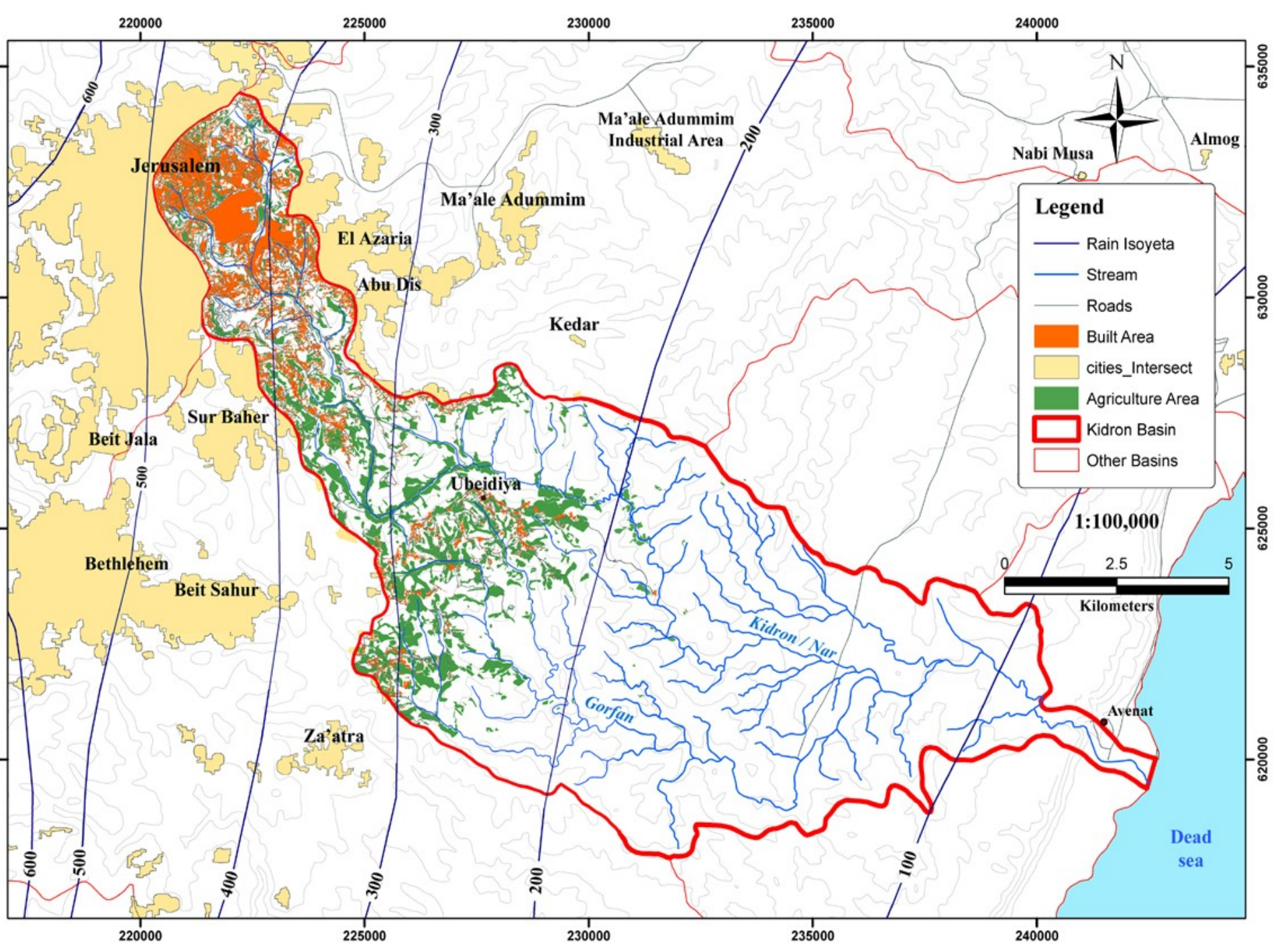
Center

Down Stream

Legend
 Kidron Basin
 Cities
 Roads
 Hieght contour

0 2.5 5
 Kilometers

Up Stream	53.21	111.8	3.54
Center	69.22	115.4	2.11
Down Stream	0.849	2.1	1.67



The Showcase

The upper Kidron Valley

Why do so many want to be buried there?

One view to remember

A stylized, layered mountain range graphic in shades of teal and blue, positioned in the bottom right corner of the slide.



The “Narrow Bridge” from the Mount of Olives to the Temple Mount



Further down the Valley

- ◆ Unusual scenery
- ◆ Religious sites
- ◆ (Borders)





Zacharia's Tomb



Tomb of Absalom and Hazir












The “Back Door”

- ◆ Solid Waste
 - ◆ Liquid Waste
 - ◆ Drainage and Run off
 - ◆ Infrastructure
 - ◆ Poor planning
- 

Solid Waste



Solid Waste



Solid Waste



Drainage

Urban development results in a dramatic increase in runoff volume & decrease in sediment discharge downstream





KIDRON VALLEY, C. 1932

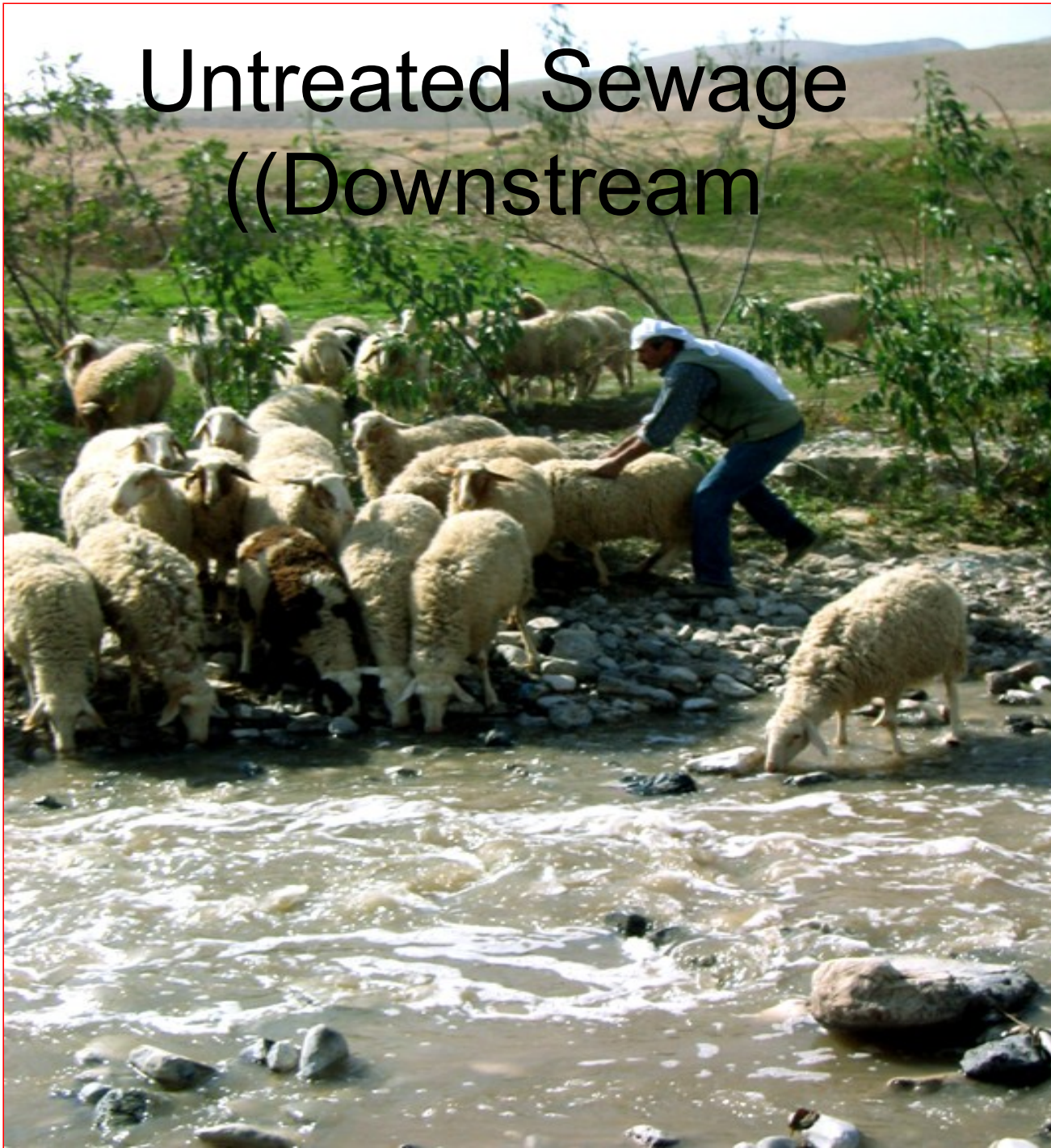
Untreated Sewage



Untreated Sewage



Untreated Sewage (Downstream







Attempts in the Past to Solve the Problem

Agreement between Jerusalem and Bethlehem

Agreement between Israel and the Palestine Authority

AGREEMENT

Drawn up and signed in Jerusalem

between

The Municipality of Jerusalem (hereinafter: the Municipality)
represented by the Mayor and the Treasurer

and

1. The Municipality of Bethlehem, represented by the Mayor
2. The Municipality of Beit-Jala, represented by the Mayor

jointly and severally (hereinafter: the Municipalities)

Whereas The municipalities of Bethlehem and Beit-Jala are seeking a solution to the problem of disposal of sewage in their areas; and

Whereas The Municipalities have asked the Mayor of Jerusalem to assist the two aforementioned municipalities in disposing of the sewage; and

Whereas By request of the Municipality, the opinion of an expert was obtained, according to which the Municipalities can be connected to the Jerusalem sewerage network; and

Whereas The City Council, in its meeting of 23.10.1985, approved linking the sewerage system of the above municipalities to that of Jerusalem, in accordant with the conditions specified below;

The parties therefore agree and stipulate the following:



(1995 PROPOSAL)

1

PROPOSAL
FOR GERMAN-PALESTINIAN-ISRAELI COOPERATION
IN CONSTRUCTING A WASTEWATER TREATMENT PLANT
FOR THE CITIES OF JERUSALEM, BETHLEHEM
AND ADJACENT AREAS

Description of the Problem

For many years the raw, untreated wastewater of the southeastern neighborhoods of Jerusalem and of the eastern sections of Bethlehem has been discharged into the Kidron and Dragot wadis located to the east of these cities. Part of the sewage seeps into the groundwater while the remainder creates environmental nuisances, such as mosquito breeding-areas and foul odors. In addition, some of the untreated wastewater is frequently used by local farmers for growing vegetables.

The rapid development expected to take place as a result of the peace agreements, together with one of the highest birth rates in the world (about 3% per annum), will bring about accelerated urbanization and industrial growth in the area. This is expected to lead to an increase in and further development of water supply systems, and thus a greater quantity of wastewater generation.

While seeking a solution to the problem, the municipalities of Bethlehem and Jerusalem decided that the best economic and environmental solution would be to establish a joint sewage treatment facility. However, both municipalities are unable to bear the high costs involved in the construction of such a joint facility. Therefore international assistance is of primary importance for the implementation of this endeavor.

Population Growth Forecast

Currently there are about 200,000 inhabitants within the southeastern Jerusalem area, comprised of about 60% Palestinians and 40% Israelis.

The average number of persons in a Palestinian family is 6.0; in an Israeli family, 4.0. The annual population growth rate is estimated at 3.0% for Palestinians and 2.0% for Israelis.

In the eastern Bethlehem area the present population is estimated at 40,000 inhabitants. The average number of persons per family is 5.5 and the annual growth rate is 3.0.%

Palestinian National Authority
Ministry of Planning & International
Co-operation
Projects Planning & Monitoring Directorate



972 2 5533752875 P. 8
السلطة الوطنية الفلسطينية
وزارة التخطيط والتعاون الدولي
الإدارة العامة للتخطيط ومتابعة المشاريع

H.E. Carl-Dieter Spranger
Minister of Economic Co-operation & Development
Federal Republic of Germany

Fax: 00 49 2285353475

Gaza, January 2, 1996

Your Excellency,

Re.: Joint Bethlehem-Jerusalem Wastewater Treatment Plant

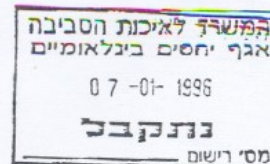
I would like to express our gratitude to the Federal Republic of Germany for its contribution to support our joint project for German-Palestinian-Israeli co-operation in constructing a wastewater treatment plant for Bethlehem & Jerusalem. In fact, this project will benefit both of Palestinian & Israeli peoples and will contribute to the betterment of the environment.

In spite of the urgency of this project, we are obliged to defer signing the proposal till the end of the election process and establishment of the Palestinian Executive Council.

I hope that this delay would not suspend our aspiration for implementing this vital project.

Again, I thank your excellency for your assistance and I wish every success for this project.

Please accept my highest esteem & consideration.



Yours sincerely,

Ali A. Sha'at
Assistant Deputy Minister
Ministry of Planning &
International Co-operation

c.c.: Mr. Yossi Sarid - Minister of the Environment, Israel
Mr. Kamel El-Musseini - Int'l Relations - Orient House

Tel: 07 - 329260 - 829258
Fax: 07 - 824090

تلفون: 07 329260 - 829258
فاكس: 07 824090

.Catchment Basin Mgmt

Let's look at the governance scheme:

Too many stakeholders

Lack of symmetry between Israel and PA

Lack of Will: Politicians plan for the next election; statesmen plan for the next generation

Israeli Legal & Administrative Authorities: Kidron

National Level

Government Ministries and Agencies- Environment, Health, Interior, National Infrastructure, Defense, Treasury, Foreign Affairs, Water Commission, Nature Reserves and National Parks Auth., National Planning Board, Antiquities Auth

Israeli-controlled West Bank

Military Government in Judea and Samaria- The Civil Authority- Central Authority Office, Staff Officers- Foreign Relations and Int'l Organizations, Coordination and Communication, Environment, Water, Agriculture, Archaeology, Nature Reserves and Parks; Directors for Planning, Infrastructure, Tourism; Coordinator for Health, Legal Department.

-Regional Level

Ministries (Regional Offices) and Agencies- Environment, Health, Interior, Defense (IDF Central Command), District Planning Board, Antiquities Auth., Dead Sea Drainage Auth., Council of Towns for the Environment-Judea

IDF- Regional Authority- Central Command (Including Offices for Public Inquiries, Planning and the Environment, Firing Ranges)

Local Level

City of Jerusalem- Local Planning Board, Gihon, Mavti, East Jerusalem Development Corp., Jerusalem Church Authorities, Megillot Regional Council, IDF- Local Authority

Palestinian Legal & Administrative Authorities: Wadi Nar

National Level

Palestine Water Authority (PWA), National Water Council, Ministry of Agriculture, Ministry of Health, Ministry of Planning and International Cooperation, Ministry of Local Government, Environmental Quality Authority

-Regional Level

Governate of Bethlehem, Governate of Jerusalem, Governate Departments of National Ministries (esp. Environmental Quality (and Agriculture

Local Level

Municipalities of Bethlehem, Beit Sahur, Ubeidiya, Al Azzariya, Abu Dis, Beit Jalla, Water Service and Sewage Authority (WSSA), Donor Organizations (US AID, GTZ, KfW), NGO's (ANERA, (House of Water and Environment, PARC, PENGON, PHG

A different approach: Developing a (Basin Plan (Ignoring Borders

Academic Intervention: Hebrew University,
Al-Quds University, Bethlehem University

Dead Sea Drainage and River Authority as
the catalyst. (Middle up & down, instead
of bottom up or top down.)

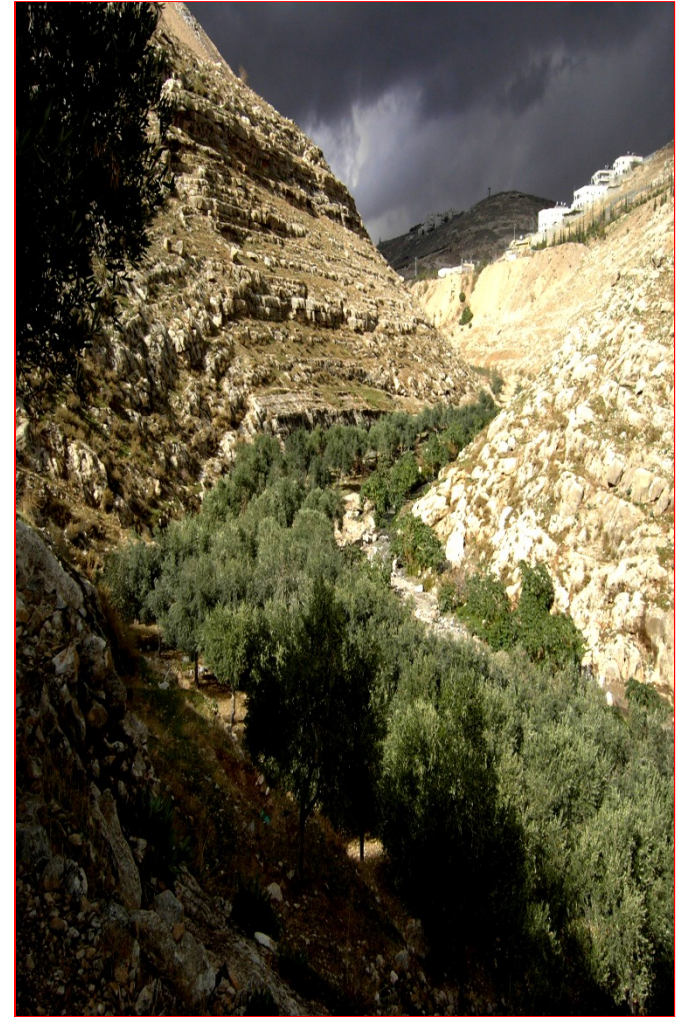
NGO's involved: Palestine Hydrology Group

[The Master Plan Concept]

- A multi-disciplinary team of scholars from Israel and the Palestine Authority are engaged in developing a master plan for the entire Kidron watershed.
- The City of Jerusalem is one of the key players and a member of the steering committee for the master plan.

The Vision

- **Treat the Basin as one “country” and develop that “country”**
- **Invest in infrastructure and improve the quality of life of the residents**
- **Rehabilitate the ecological system, improve the environment and create a “green” vision**
- **Get recognition of the valley as a World Heritage Site**



Crossing the Bridge

- A River can be a **border** between peoples or a **bridge** to cooperation
- The bridge from the Mount of Olives to the Temple Mount is planned for the righteous,
- But Who's going to build it?
- And are we going to wait for the Messiah?

A Peaceful Environment

- Jerusalem may not be the financial capital of the world but it has historically been the spiritual capital of the world, and it is here, and only here, that peace can really begin, beginning with a small bridge across the Kidron valley, a bridge of reconciliation and cooperation for the protection of the environment.

A Concluding Message

- We need your help, your support, your expertise and your prayers to show the skeptics of the world that the narrow bridge over the Kidron is already in operation.
- We are not waiting for the messiah.