

Involvement of local authorities in the Development of the Integrated River basin Management Plan for the Moldavian part of the Danube river basin

Dr. Dumitru DRUMEA
Ministry of Ecology and Natural
Resources of Moldova
Institute of Ecology and Geography

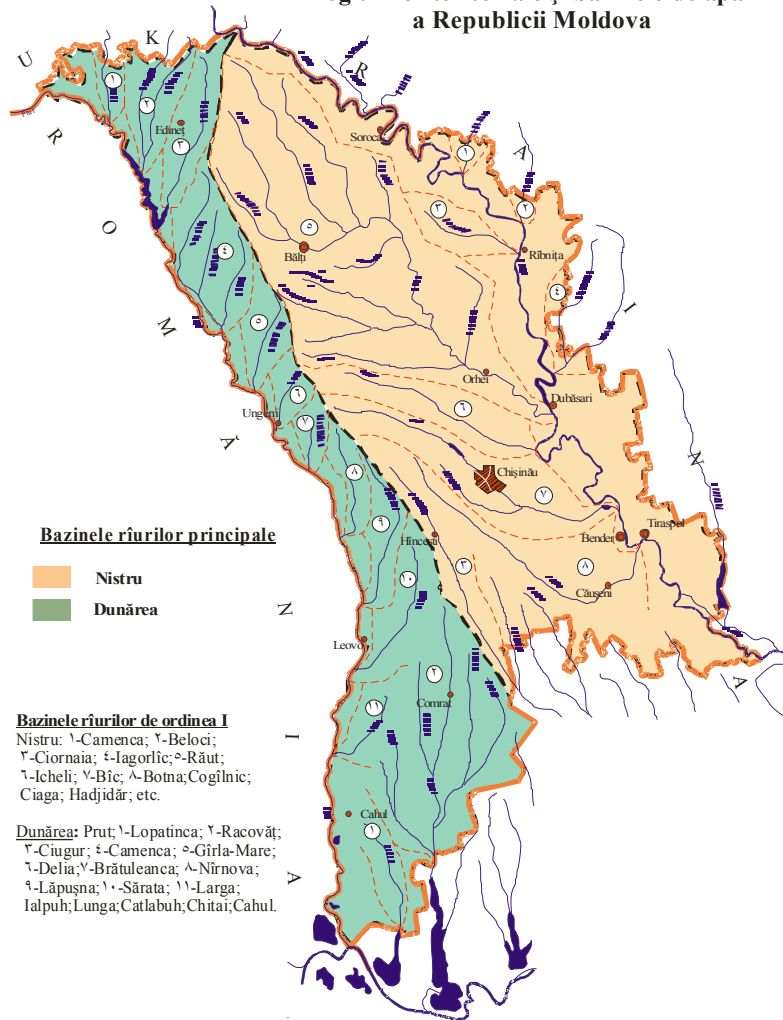
Introduction

- Prut is transboundary basin – three countries
Moldova 8300 km², Romania 11500 km² and
Ukraine 8200 km².
- Ukraine, Moldova
 - WFD is not obligatory because countries are not
member of EU or accession.
 - Prut countries are a Contracting Parties of ICPDR.

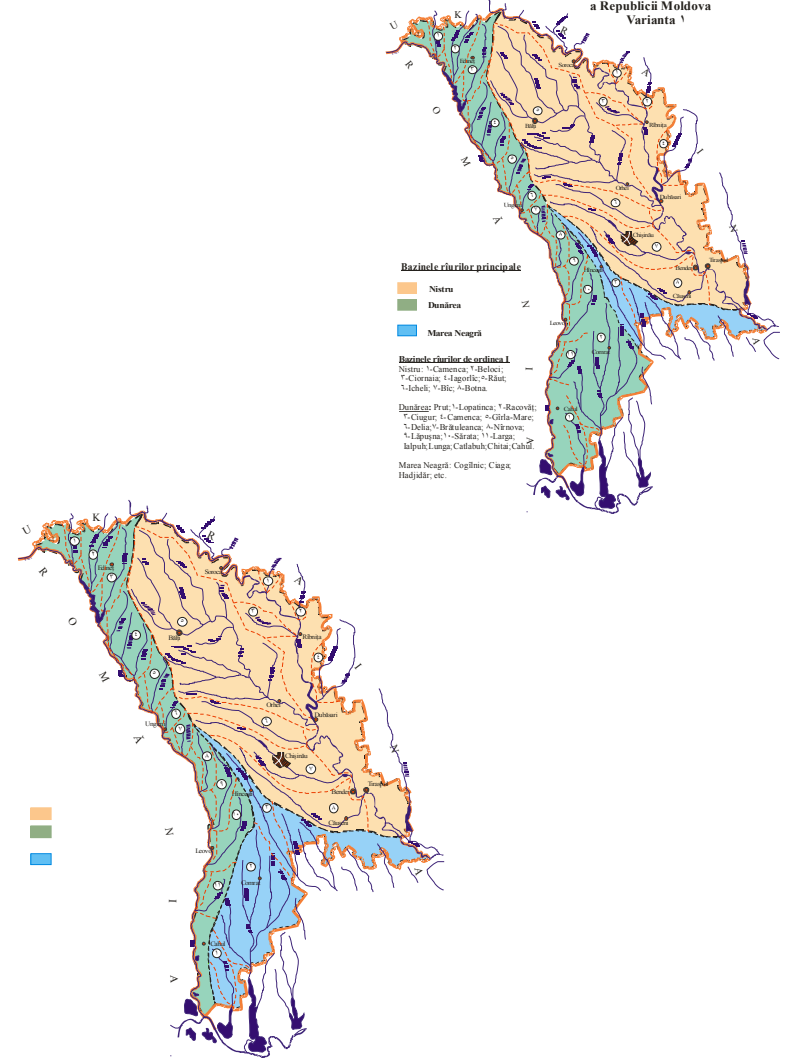
 and assumed responsibility to develop Prut
RBMP as part of Danube RBMP

River basin in the Republic of Moldova

Schema regiunilor teritoriale și bazinele de apă a Republicii Moldova



Schema regiunilor teritoriale și bazinele de apă a Republicii Moldova Varianta 1


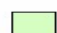











Pрут River Basin Map

Sub-basin of the Danube River Basin District

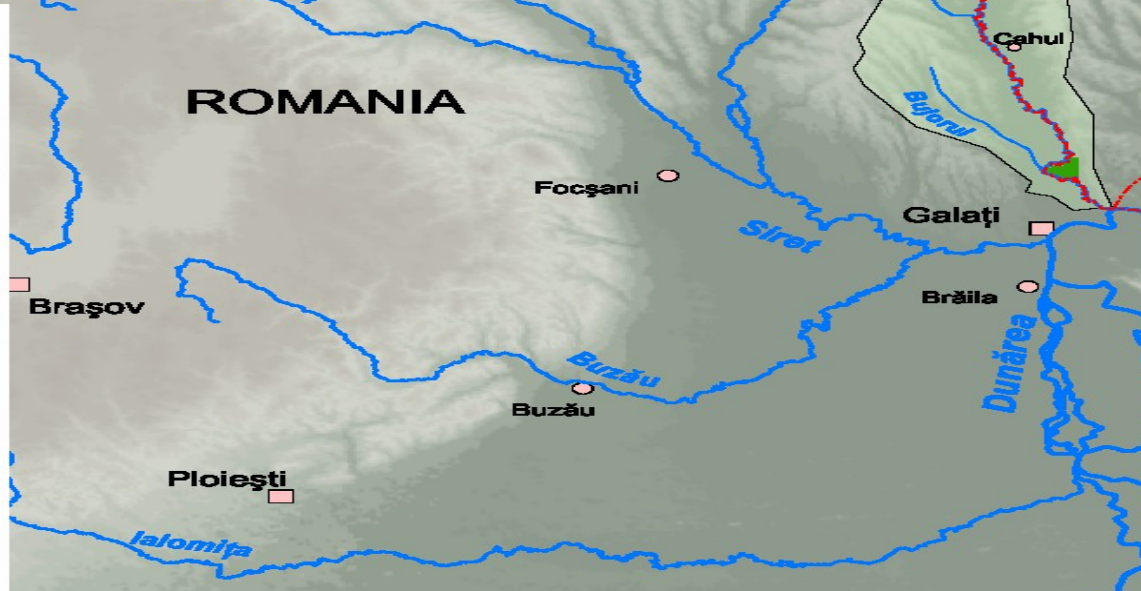


Legend

-  Danube River Basin District (DRBD)
-  Prut River Sub-Basin (PRSB)
-  Protected areas
-  Tributaries (river basins > 4,000 km²)
-  Other important tributaries
-  Competent authority
-  National borders
- Cities:**
-  > 1,000,000 inhabitants
-  250,000 - 1,000,000 inhabitants
-  100,000 - 250,000 inhabitants
-  Other important towns

0 25 50 100 Kilometers

N



Consultation meetings were organized in the frame of the Danube Regional Project during 2006.

Total more than 200 local authorities were involved in this process in Moldova

Main results of the consultation meetings

- Efficient involvement of local authorities in implementation of the provisions of Integrated River Management Plan as a tool for application of the WFD in Prut river basin and cooperation with the river basin council.
- Rising of the capacities of local authorities in efficient use of financial, human and other resources accumulated in the region with development of relevant training programs based on EU experience in this domain with further fund rising for development of the water related activities (drinking water supply network, waste water treatment, etc) in the Prut river region
- Harmonization of local development plans (infrastructure, economical development, social; aspects, etc) with provisions of the Integrated River Basin Management Plan, including of the technical projects in the Program of Measures
- Cooperation of local with central authorities in the development of legislative acts, standards etc for development of water management

- Clear sharing of responsibilities among sectoral local authorities in the field of water management
- Attraction of local business community in the development of the water networks (drinking water supply, waste water treatment, sanitation of settlements, etc) with economical estimations and research in the field of economical studies of different aspects of water use and management.
- Development of the local political infrastructure for extension of water services in different domains of economy and social life
- Assuring of gender equity in planning and implementation process for development of the system of water management

Lessons learned

- Local authorities showed a very strong commitment for implementation of the EU Directives through development and implementation of the management plans and program of measures
- One of the efficient ways for involvement of local authorities in this process is organizing of regional water dialogs on different topics
- Utilization of water resources in reasonable way taking into account inter-basin diversion
- To resolve possible conflicts in amicable way and consultations with sectoral authorities and civil society
- Cooperation with local river basin council consisted from representative of 3 countries