



ADAORA OKONKWO



water & forestry

Department:
Water Affairs and Forestry
REPUBLIC OF SOUTH AFRICA



**APPLICATION OF INTEGRATED WATER
RESOURCES MANAGEMENT APPROACH TO
THE MANAGEMENT OF SHARED KOMATI
RIVER BASIN**

M.P Nepfumbada

M.J Matlala



INTRODUCTION

Komati River Basin is an important water resource for South Africa, Swaziland and Mozambique.

After the signing of the treaties in 1992 by South Africa and Swaziland, the Komati Basin Water Authority was established.

Their task was to establish and operate the development projects in the Komati River Basin.

Two projects namely the Maguga and the Driekoppies dam projects were identified.



KOMATI RIVER BASIN



OBJECTIVES

To examine the application of an integrated management approach to the management of the komati river basin.

How it has contributed so far to the management of the transboundary water resource.



METHOD

Three parameters:

- Social
- Economics
- Environmental

These were done by looking at these parameters before and after the agreements were signed.





FINDINGS



- SOCIAL AND ECONOMIC

a relocation action plan was developed and agreed by the parties as part of the social impact assessment for the Driekoppies dam with close consultation and negotiation and; a resettlement and development plan was designed for the Maguga Dam

Both were done through a participatory approach involving all stakeholders.



FINDINGS contd

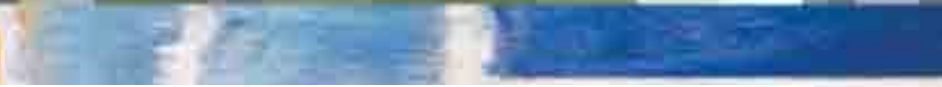


There are improved social amenities in the area like:

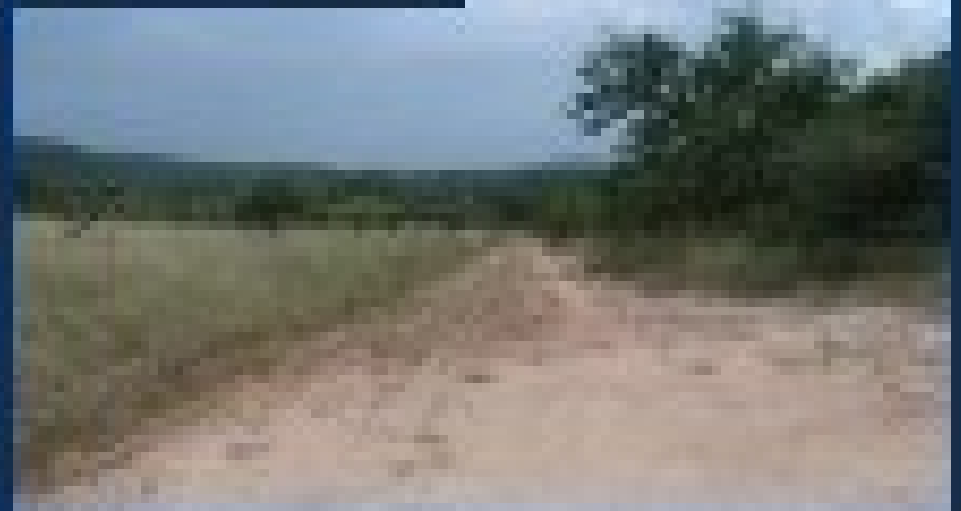
- Better access roads
- Better houses for the displaced
- Improved agriculture
- Portable water supply
- Improved schools
- Community and business centre
- Construction of a clinic







OLD ROAD



NEW ROAD





FINDINGS contd

- There was also reduction in poverty and unemployment through commercial agricultural development targeted especially to rural areas.
- There is a Komati Joint Operations Forum which meets every month to assist in making recommendations regarding the management of the river basin.



FINDINGS contd



ENVIRONMENTAL



- Environmental impact assessment was conducted before the start of the projects and used as base line for monitoring.
- There is a comprehensive water quality monitoring programme in place based on five monitoring types.
- This data is compared with the base line data collected during the environmental impact assessment.



CHALLENGES



- Maintenance of the water quality standards
- Obtaining the actual water use
- Meeting the allocation demand
- The relocation plan is still ongoing due to land claims



CONCLUSIONS

The application of an integrated approach demonstrates the effectiveness of this approach in managing the Komati river.

However, the loss of ancestral land by the communities and the non-recognition of women as important players in the provision, management and safeguarding of water are still topical issues.



ACKNOWLEDGEMENT

- Department of Water Affairs and Forestry.
- Yvonne Moeme for her help with the map.
- KOBWA for the use of their photographs.



Thank you