

IV TWM International Symposium
Thessaloniki, Greece, October 15-18, 2008

The Interplay Between Water Institutions and Practices in the U.S.-Mexico Upper San Pedro Basin: Is Economic Development Sustainable Where Transboundary and Regional Policies Conflict?



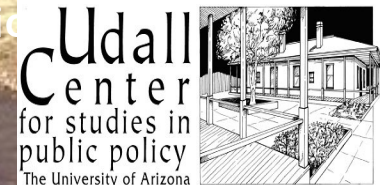
EL COLEGIO
DE SONORA

MC. José María Martínez R.
El Colegio de Sonora
MÉXICO

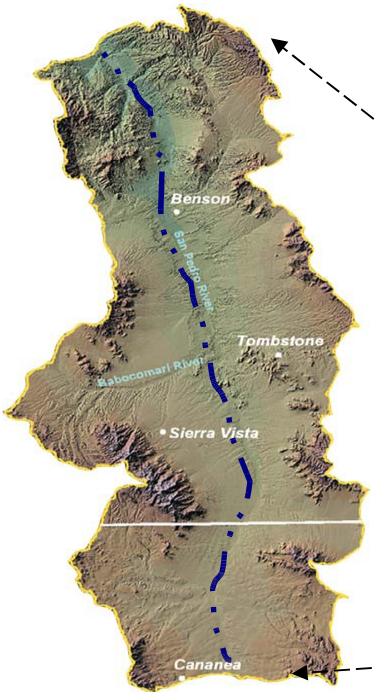


COMISION NACIONAL DE
ÁREAS NATURALES
PROTEGIDAS

Dr. Anne Browning-Aiken, Senior Researcher and Program Manager
Environmental Policy and Community Collaborative
Udall Center for Studies in Public Policy
University of Arizona



MEXICO-U.S. TRANSBOUNDARY WATERSHED



**San Pedro River
Basin**



Neoartic

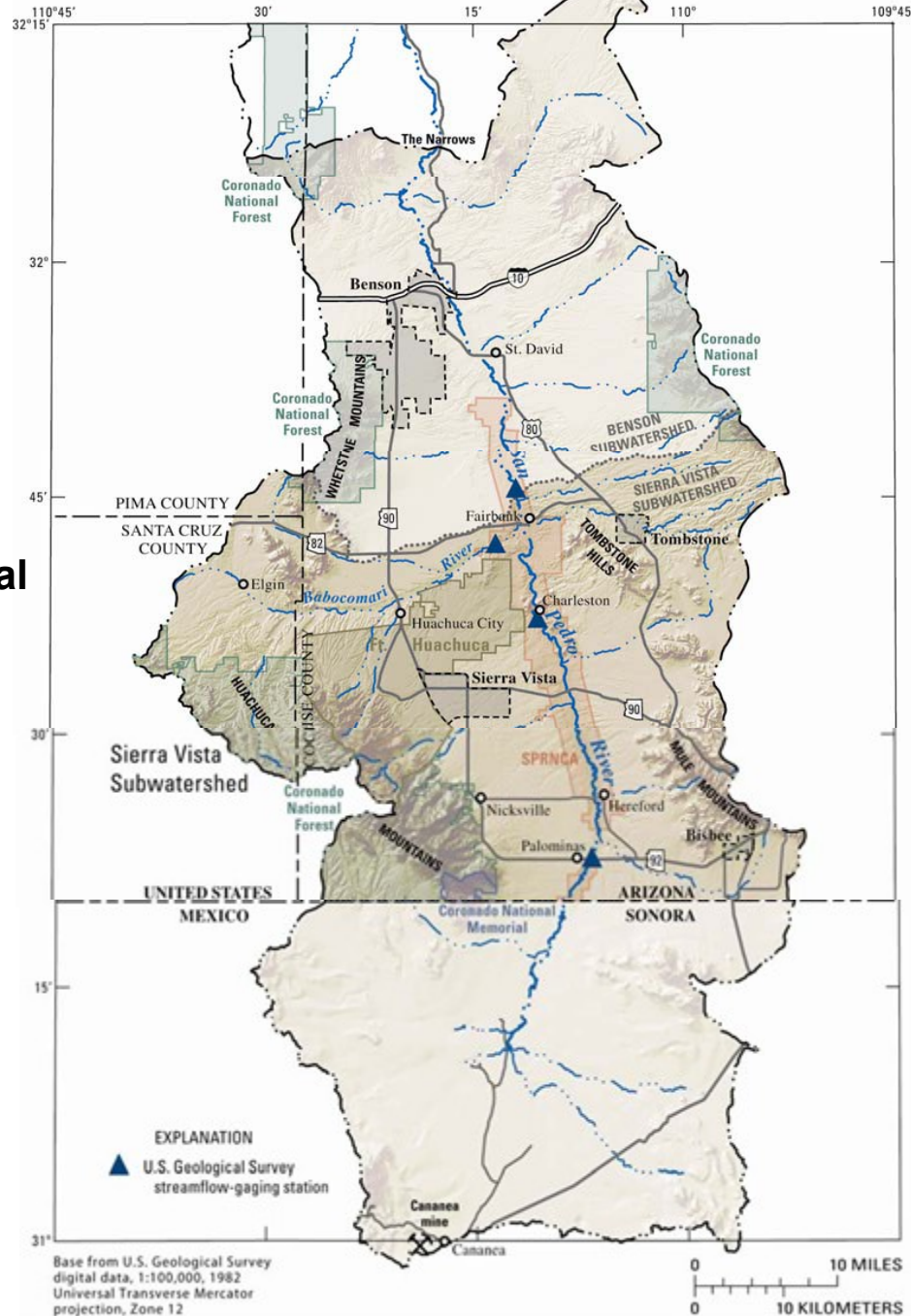


Shearing biological limits in a very delicate balance

1rst. world



Economic, social, politic and cultural boundary



3rd. world

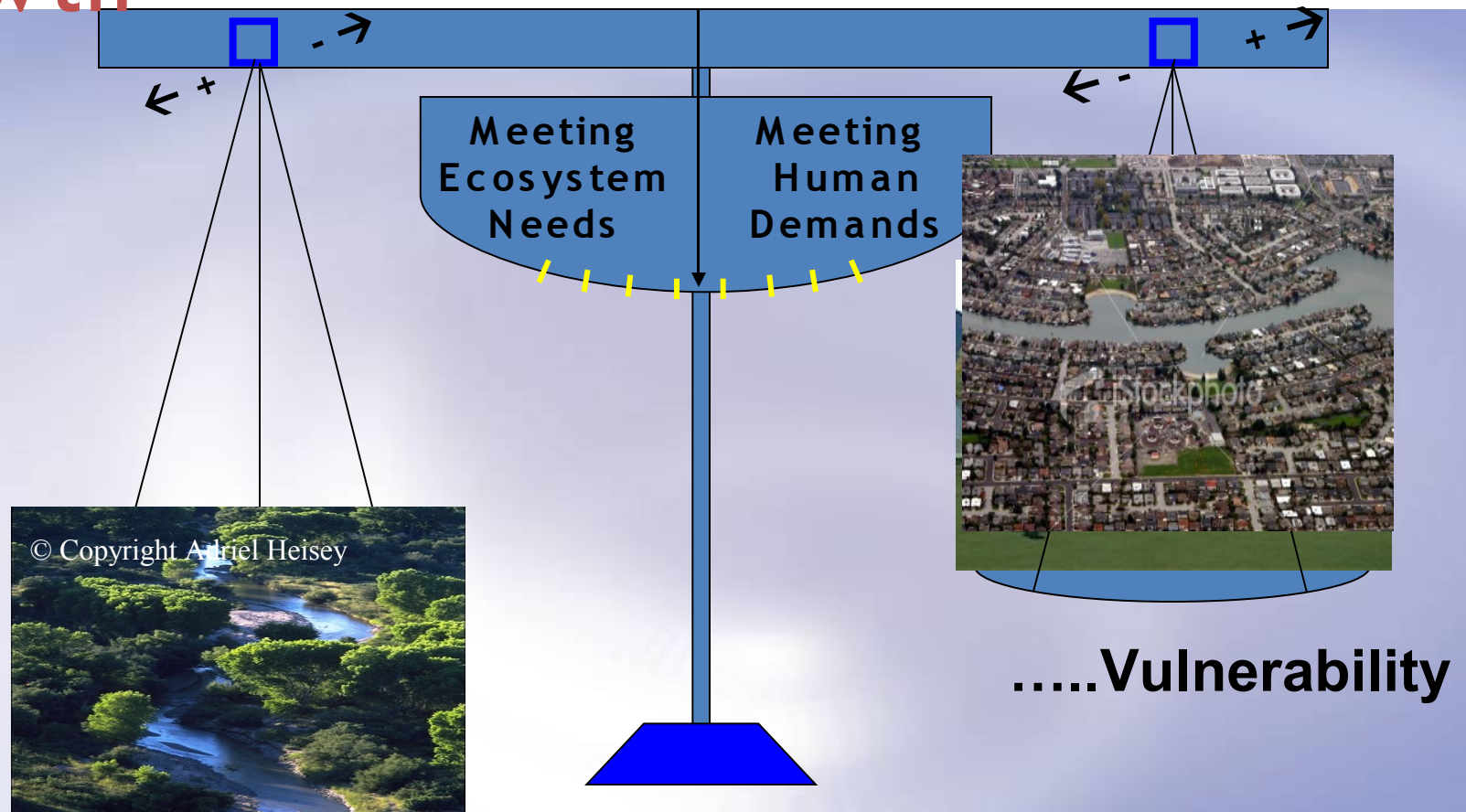
Neotropical



U.S.-Mexico San Pedro River Basin: Socioecological context



Finding the balance: Conflict between ecological system services/values and economic growth

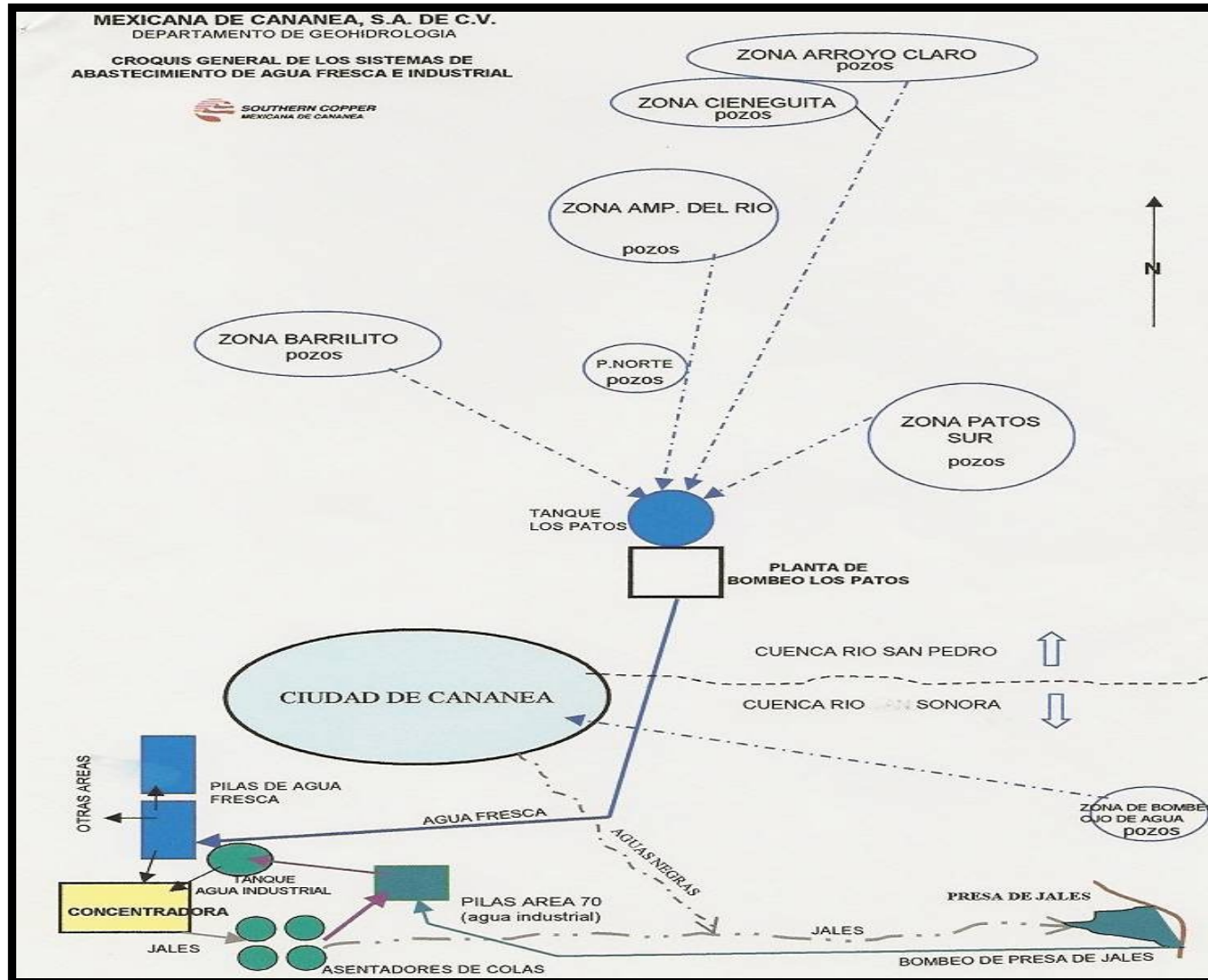


TERRITORIAL PLANNING



Two different municipal counties and three different hydrologic basins

SITUATION OF THE WATER RESOURCES



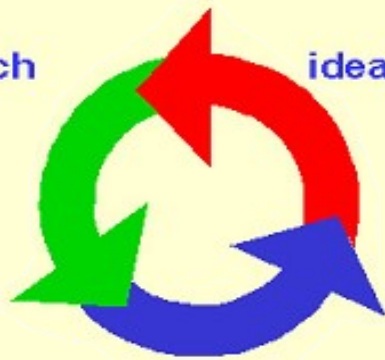
Role of HELP in promoting effective transboundary IWRM & building socioecological resilience

.....based on outdated knowledge and technology

**Biophysical Scientists
and Process hydrology**
Process hydrology

research

ideas



understanding

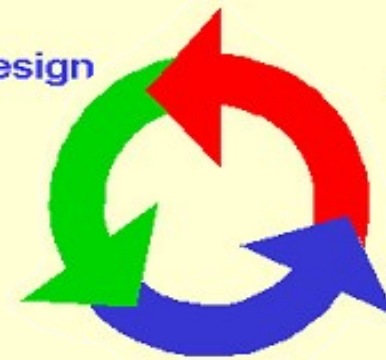
Isolated by lack of
proven utility



**Water managers and
stakeholders**

design

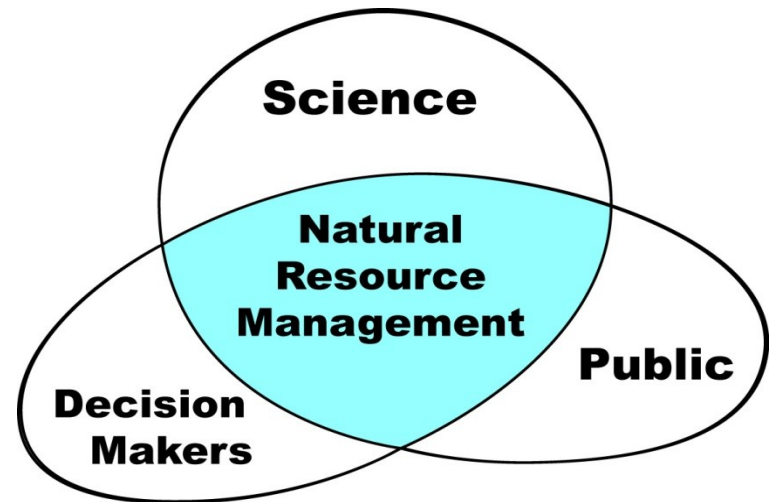
output



implementation

Isolated by disaggregated
institutions

Resilience of institutions depends on the development of social capital

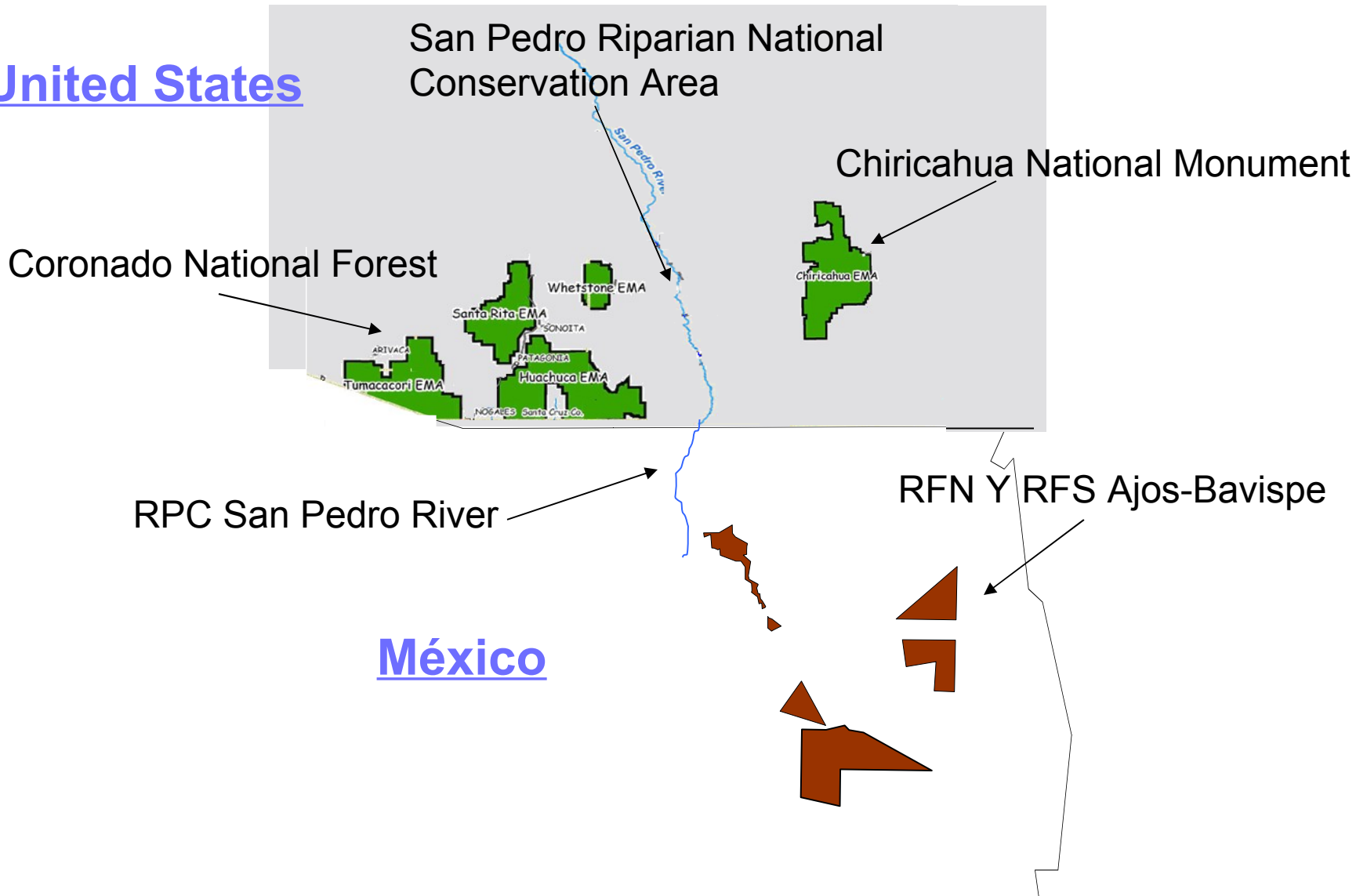


COLLABORATION:

Coordinated working between specialized agencies on both countries in some technical research, regarding a more detailed underground aquifer performance, estimation of sources and levels of contamination, as well as scenarios construction based on different hydrological management sources, would allow some coordinated actions which primary objective should be trying to attend problems that affect directly the whole hydrographic basin system.

TRANSBOUNDARY NATIONAL PARKS

United States



An aerial photograph of a vast mountain range with multiple ridges and valleys. The mountains are covered in green vegetation, and the sky is a clear, pale blue. The text is overlaid on the left side of the image.

COLLABORATION:

Even though the relationship among the so called “sister reservations” both sides of the boundary has showed an acceptable level of cooperation, it is necessary to strengthen the integration activities by exchanging human and technological resources that will allow an improvement on shearing natural resources status monitoring.

Contribution to *HELP* framework



**Economic Development IS Sustainable
Where Transboundary and Regional
Policies Conflict WITH THE *HELP*
EMPHASIS ON SOCIAL CAPITAL
developed through COLLABORATION of
scientists, water managers, and
stakeholders from the start**

browning@u.arizona.edu
josemaria@colson.edu.mx